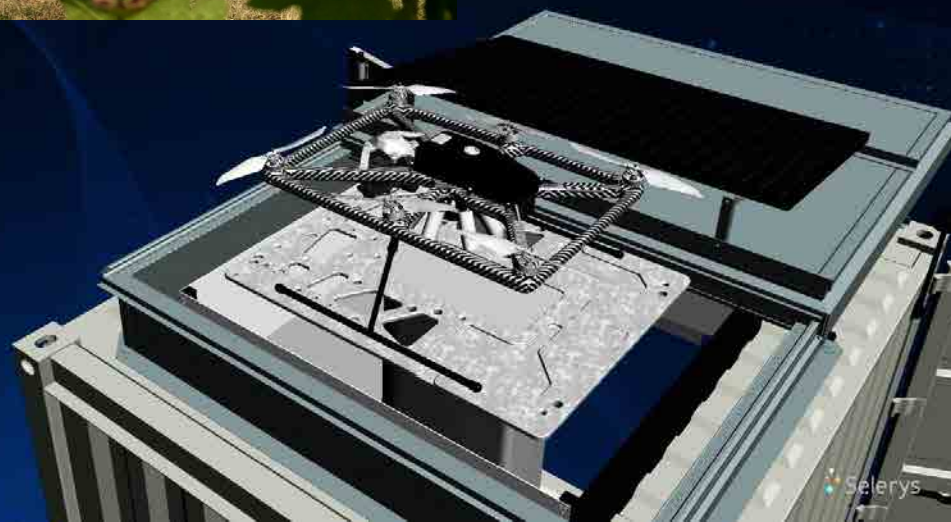
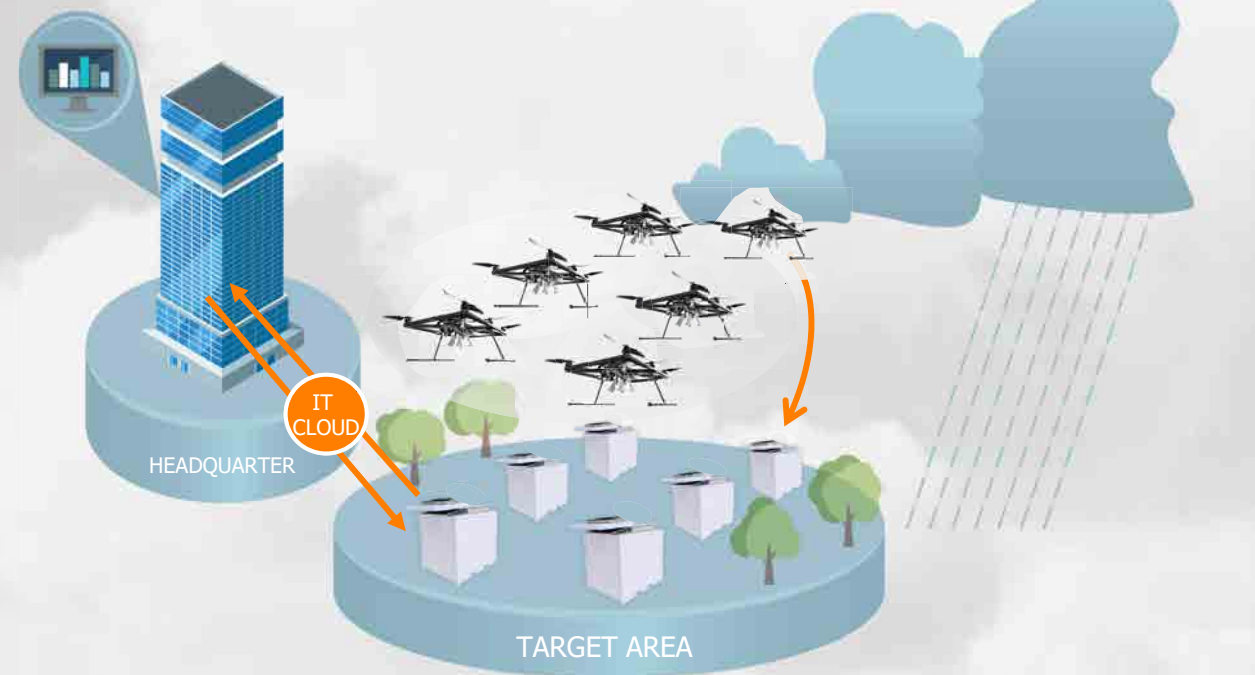
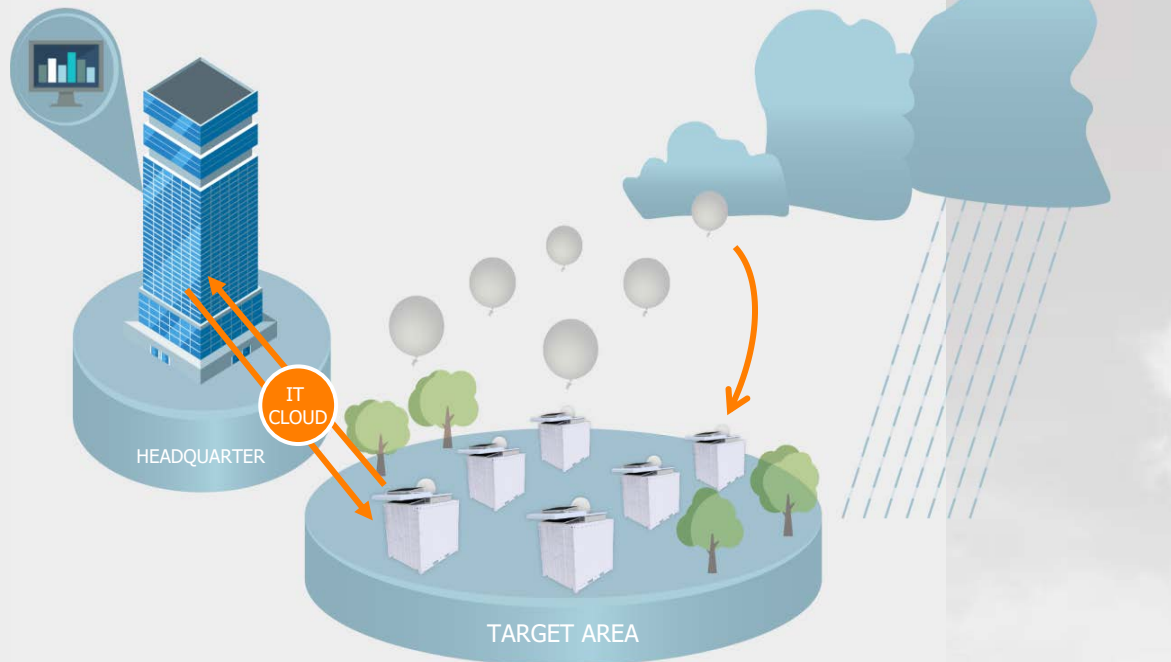




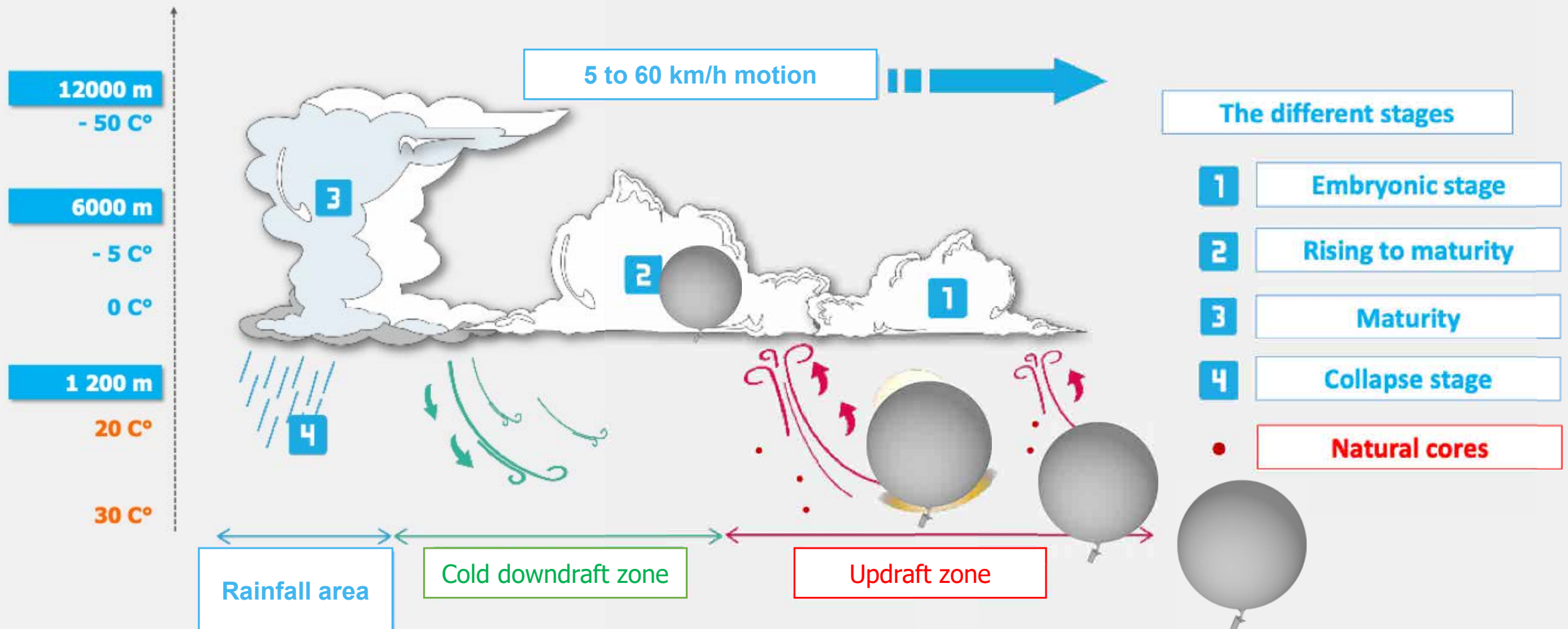
# COMPETITIVE AND REACTIVE UNMANNED AERIAL CLOUD SEEDING VECTORS



# BALLOONS / DRONES NETWORKS CENTRALIZED OPERATION ARCHITECTURE



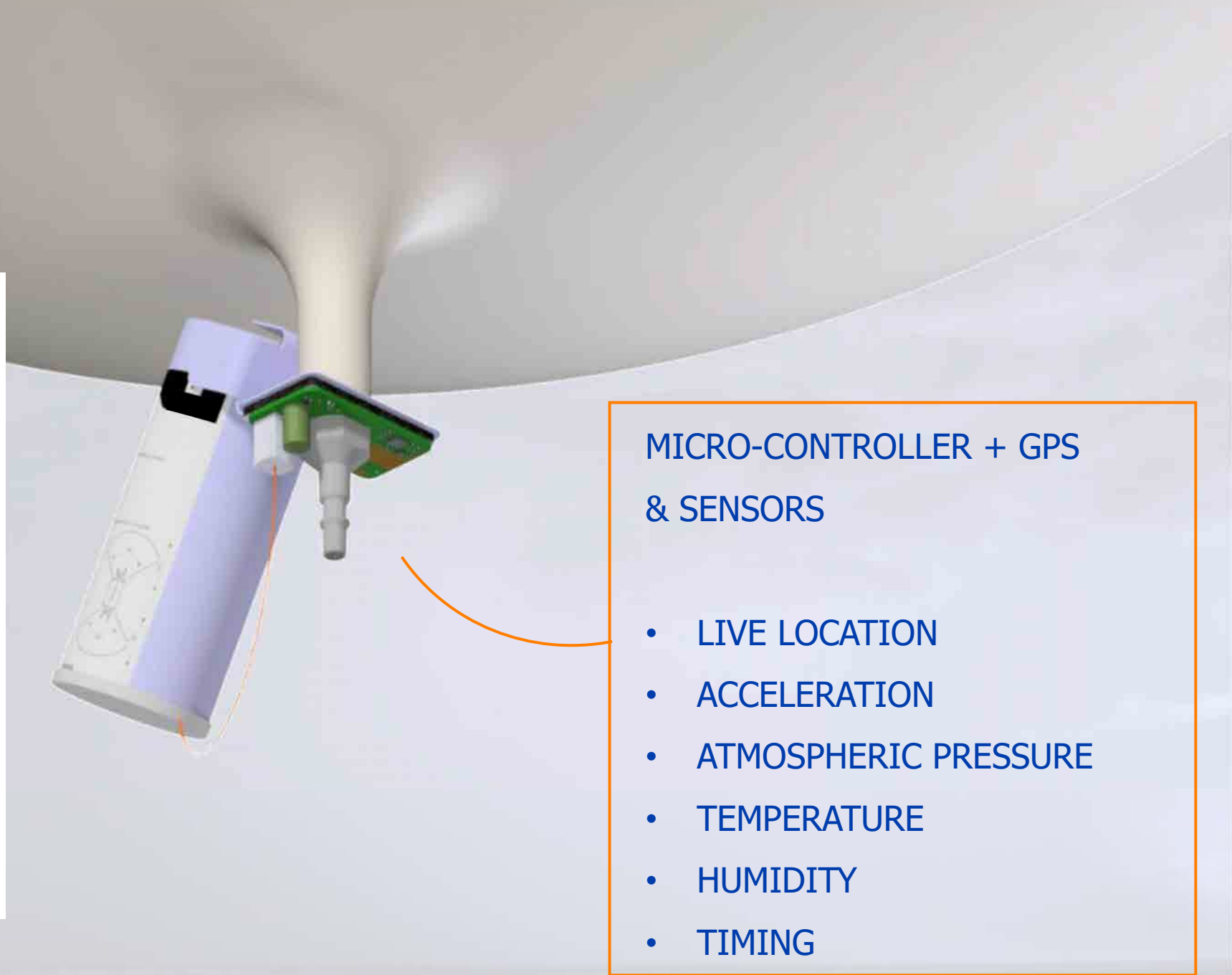
# UNMANNED VECTORS AREAL SEEDING PROCESS



## The key of LAICO™ BALLOON CORE SEEDING

The balloon as an  
intelligent vector .

An onboard **chip &  
micro-controller** to  
adjust ignition upon  
optimized rules of  
engagement.



### MICRO-CONTROLLER + GPS & SENSORS

- LIVE LOCATION
- ACCELERATION
- ATMOSPHERIC PRESSURE
- TEMPERATURE
- HUMIDITY
- TIMING



TECHNICAL ELEMENTS - LAICO™

## LAICO™ BALLOON: COMPETITIVE AND REACTIVE CLOUD SEEDING VECTOR



LAICO™ **SOBLI**

REMOTELY CONTROLLED  
LAUNCHER



LAICO™ **SMART** BALLOON  
INTELLIGENT BALLOON

3 INTERNATIONAL PATENTS



## The key of LAICO™ DRONE

### HIGH LOAD & PRECISE FLIGHT PLAN

Dynamic flight plan  
uploading &  
optimized seeding  
thanks to embedded  
electronics.

### MICRO-CONTROLLER + GPS & SENSORS

- LIVE LOCATION
- UPDRAFTS WINDS
- ATMOSPHERIC  
PRESSURE
- TEMPERATURE
- HUMIDITY
- TIMING

# BALLOONS / DRONES CENTRALIZED OPERATION ARCHITECTURE

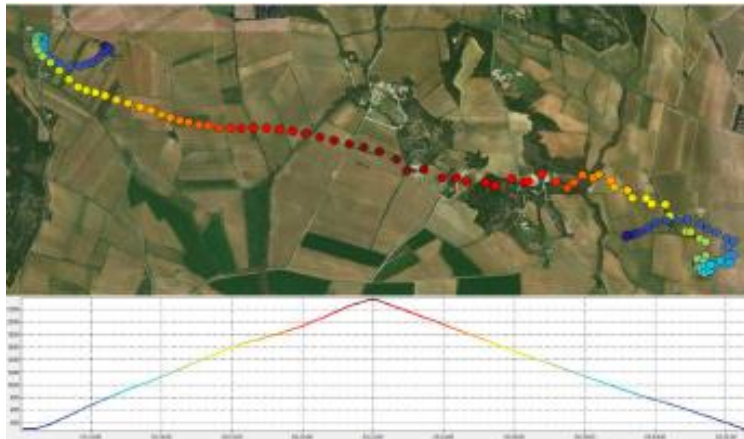
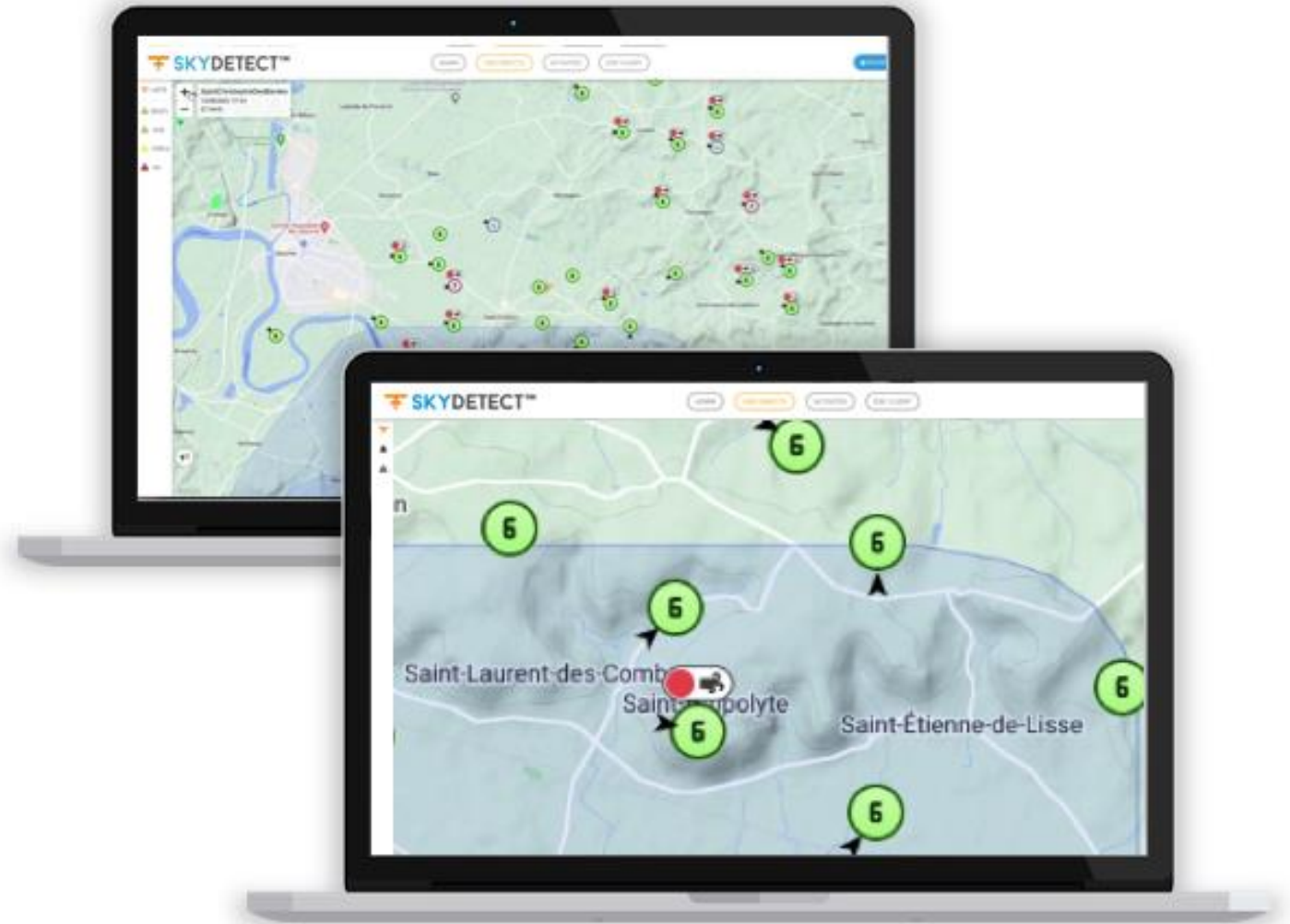


Figure 1 : PUYLOUBIER FLIGHT – 08/31/21  
7h10



TECHNICAL ELEMENTS

ADVANCED  
**LAICO**  
CLOUD SEEDING VECTOR

**BALLOONS / DRONES  
FEATURE FOCUS:**

**TRACKING GPS &  
LIVE RADIOSONDING**



# LIVE TRACKING OF THE COHORT OF BALLOONS / DRONES

LIVE TRACKING  
+  
REAL TIME  
COLLECTION OF  
RADIOSONDING DATA

CONTINUOUS  
IMPROVMENT

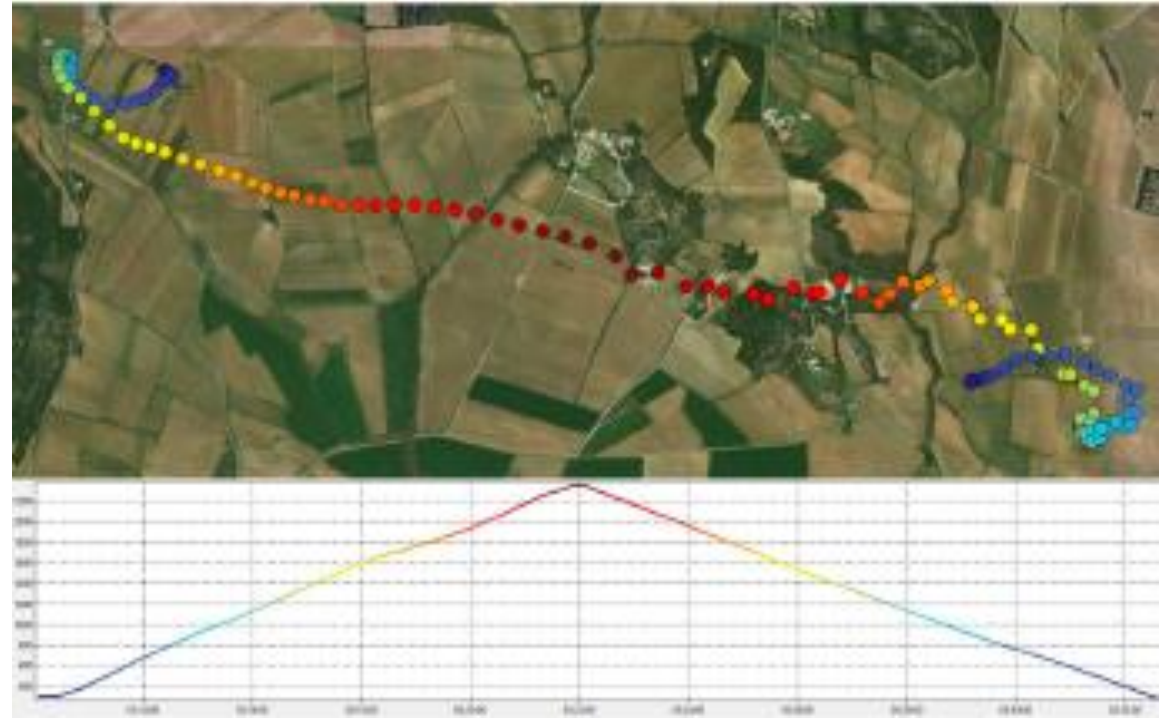


Figure 1 : PUYLOUBIER FLIGHT – 08/31/21 7h10

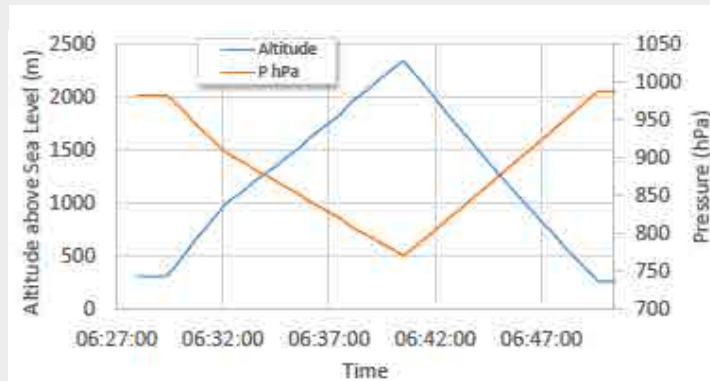
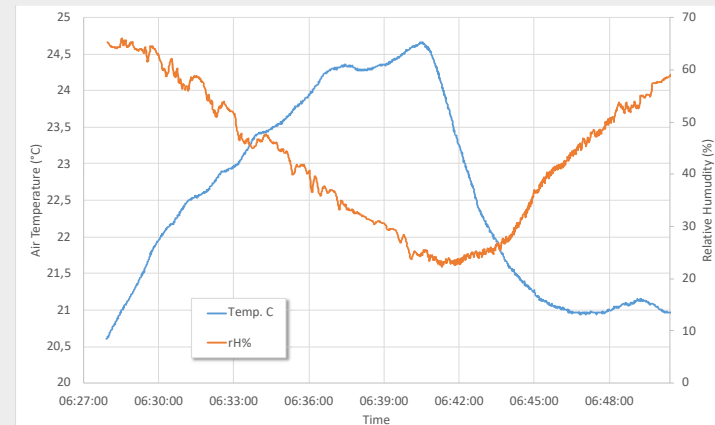
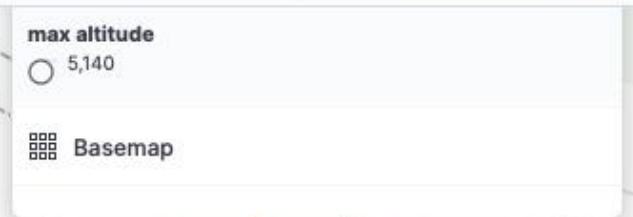


Figure 3: Val Puylobier n°2 - Pression

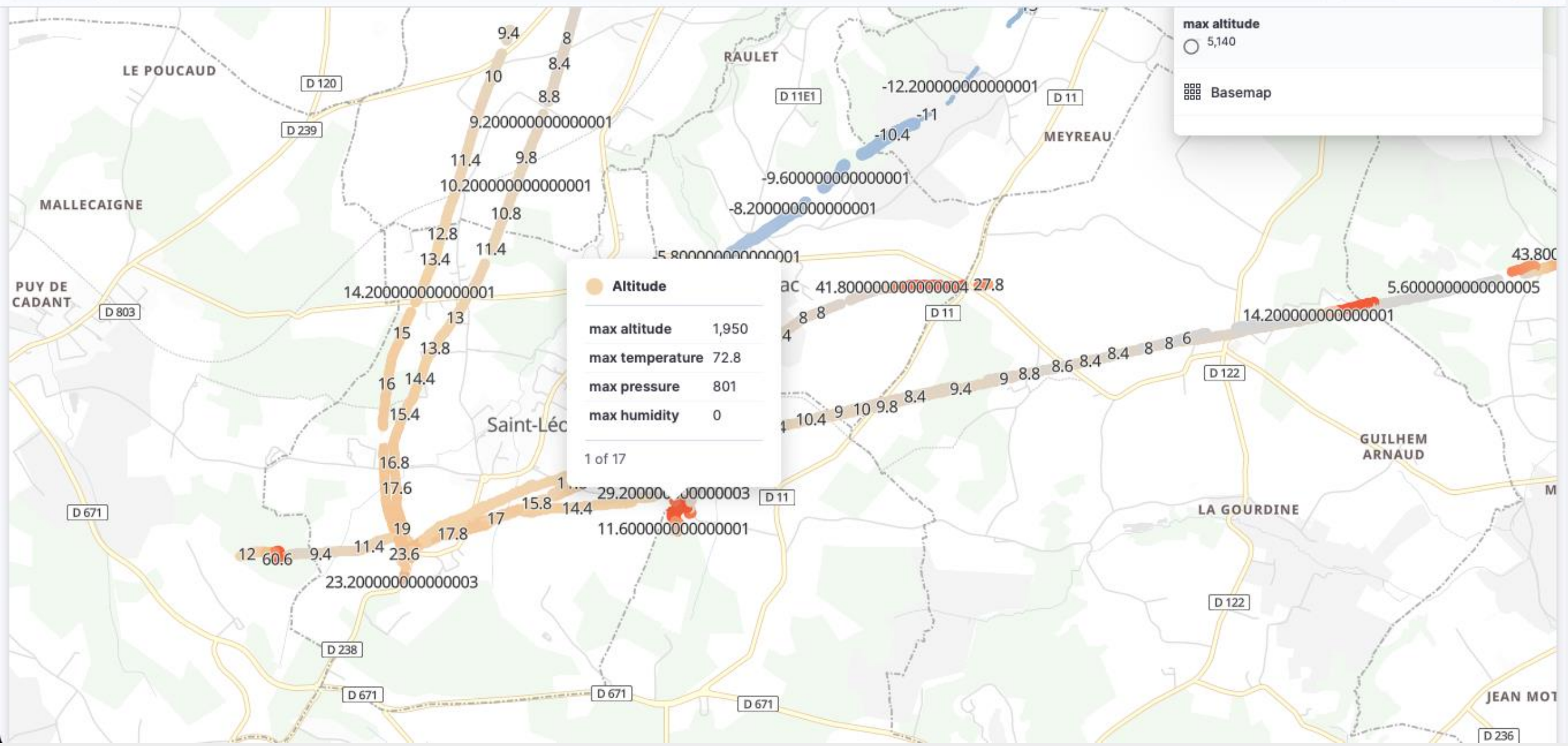


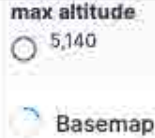




Filter your data using KQL syntax

Last 7 days







# DETECT™

ADMIN

VISU DIRECTE

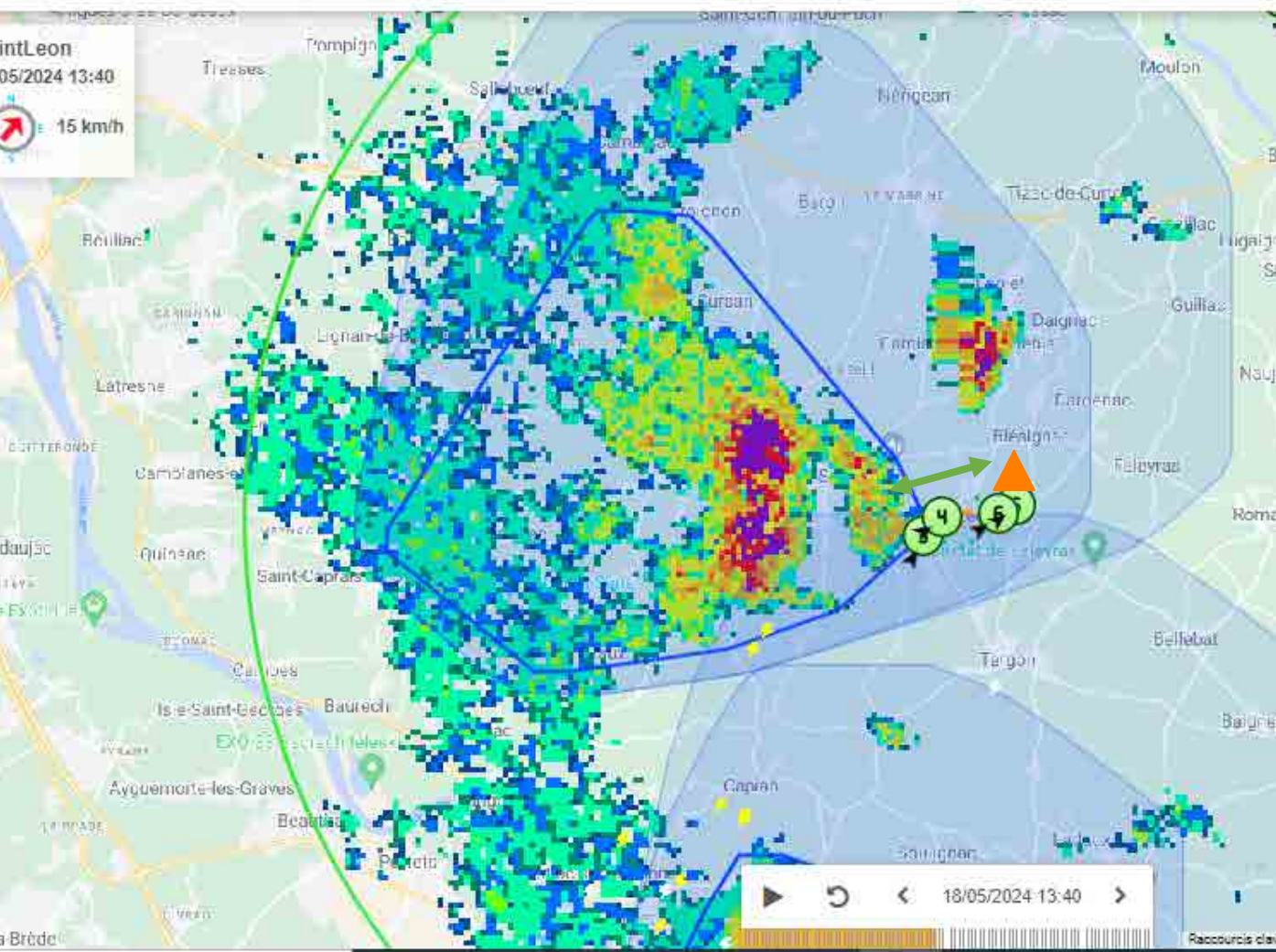
ACTIVITÉS

ESP CLIENT

intLeon

05/2024 13:40

15 km/h



Filter your data using KQL syntax



## INTEGRATED CLOUD SEEDING SOLUTION INTRODUCTION



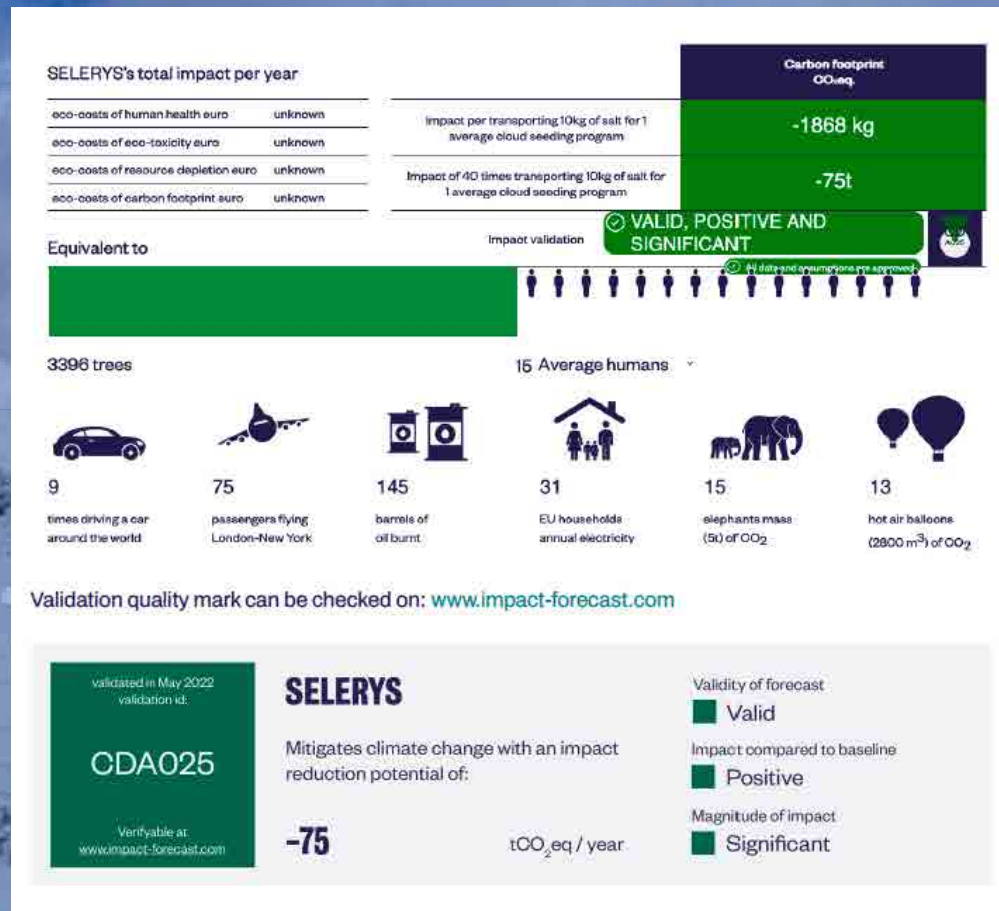
### Global system definition

**Multi-site & multi target**  
aerial seeding  
capacity with  
remote control &  
command inflators

**Simultaneous cloud base** aerial seeding  
vector launching  
capacity for various  
targets from various  
ground places



## Seed 100% opportunities with ECO FRIENDLY SOLUTION







**LET'S MEET**



**Fabrice Caquin**

**CEO**

[fabrice@selerys.fr](mailto:fabrice@selerys.fr)



**Antoine Riberat**

**Head of sales**

[antoine@selerys.fr](mailto:antoine@selerys.fr)

# CLOUD SEEDING

## 3 FUNDAMENTAL POINTS

1

### WEATHER DECISION SUPPORT



Atmospherical monitoring

Weather forecasts

2

### TRANSFER RATE



Planes



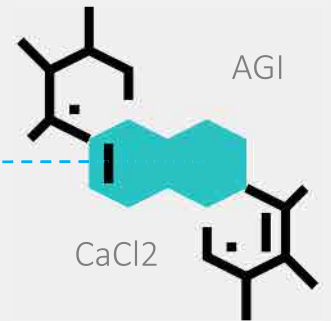
Balloons



Rockets

3

### AGENT



*Our commitment : 0 False negatives  
SKYDETECT monitors every cloud in HD & real time*

*Vector's role is to optimize the transfer rate as well as  
agent diffusion within the cloud.*