

∫ PANDA[®]

*Variable energy light weight
dynamic cone penetrometer*

∫ SOL SOLUTION
Solidly-based innovation

ENGINEERING

SOIL TESTING
AND GEOTECHNICAL
EQUIPMENT

RESEARCH AND
DEVELOPMENT

TECHNICAL TRAINING

WWW.SOL-SOLUTION.COM

PANDA®

Advantages

- Conception and development by Sol Solution
- Variable strike energy input from operator adapted to relative ground resistance
- Measurement of variable strike energy and depth for each blow provides instantaneous calculation of ground resistance
- Lightweight, portable and single person operation
- Automatic data acquisition and storage
- Integrated GPS
- Data management software GeoSprint
- Penetrographs and strike information viewable on site
- Reference curves and automatic inbuilt calculation of encountered anomalies viewable on site
- Several languages available



Characteristics

Case dimensions : L 55 x l 43 x H 21 cm

Overall weight with case : 18,5 kg

2 cm² fixed cones and 4 cm² lost cones

Colour touchscreen

Options

- Mechanical rod extractor
- Various automatic hammering systems associated
- Kit wheels on suitcase



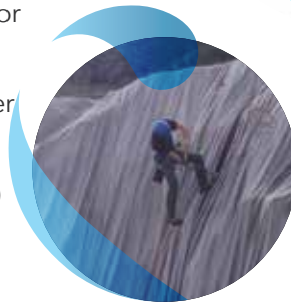
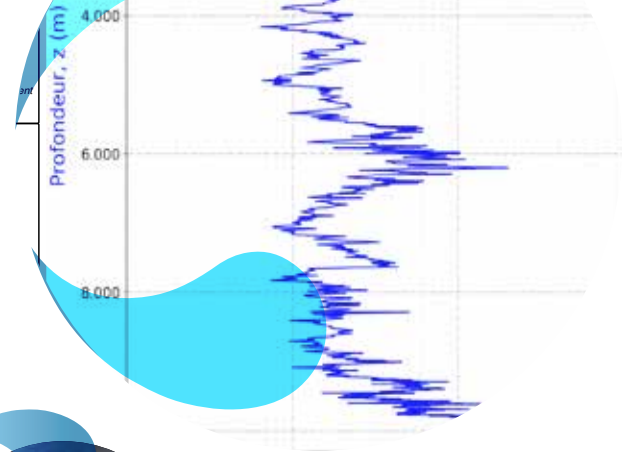
SOIL INVESTIGATIONS

Aim

TO OPTIMISE INVESTIGATION AND GEOTECHNIC DIAGNOSIS IN SOILS AND UNBOUND MATERIALS

Advantages

- Geological cross-section reference library
- Access to test results from horizontal, sloping, or steep sites
- Restricted access locations unavailable to larger or cumbersome equipment
- Geotechnical correlation (CBR, CPT, SPT, Cu...)
- Selection of outputs relating to scales, measurement units, elevation, water level.



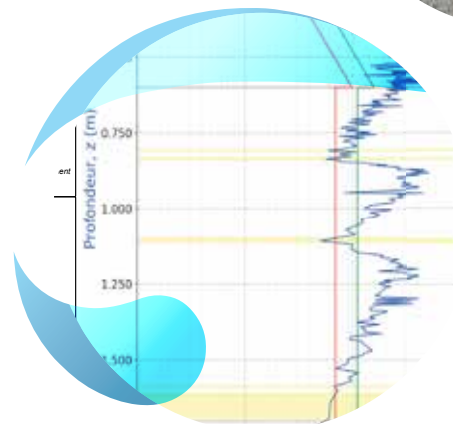
COMPACTION CONTROL

Aim

TO VERIFY COMPACTION RELATING TO TRENCHES, EXCAVATIONS, UTILITY INSTALLATIONS, EARTHWORKS, EMBANKMENTS, DIKES, ROADS, ...

Advantages

- Full depth control in one single operation
- Compaction homogeneity and layer thickness control (compacted lift thickness)
- Identification of individual structural and/or material layers (Base, Sub-Base, Backfill, ...)
- Standard database (GTR soil classification) and compaction quality.
- Inbuilt international soil classifications also available (USCS, AASHTO, DIN 1896, PG3,...)
- Various automatic calculation for compaction anomalies
- Automatic creation of reports



Conformity

Standard **NF P 94-105**

Fascicule **70**

COFRAC

SETRA Guide



SOL \int SOLUTION
Solidly-based innovation

SOL SOLUTION

ZA des Portes de Riom Nord
23 avenue Georges Gershwin
BP 178 - 63204 RIOM Cedex
FRANCE

T : +33 (0)4 73 64 74 84
F : +33 (0)4 73 64 74 80
M : contact@sol-solution.com

WWW.SOL-SOLUTION.COM